

Bleed

An extra margin of 0.125" added around the design that will be trimmed after printing. It prevents unwanted white edges. All backgrounds and images should extend to the bleed area.

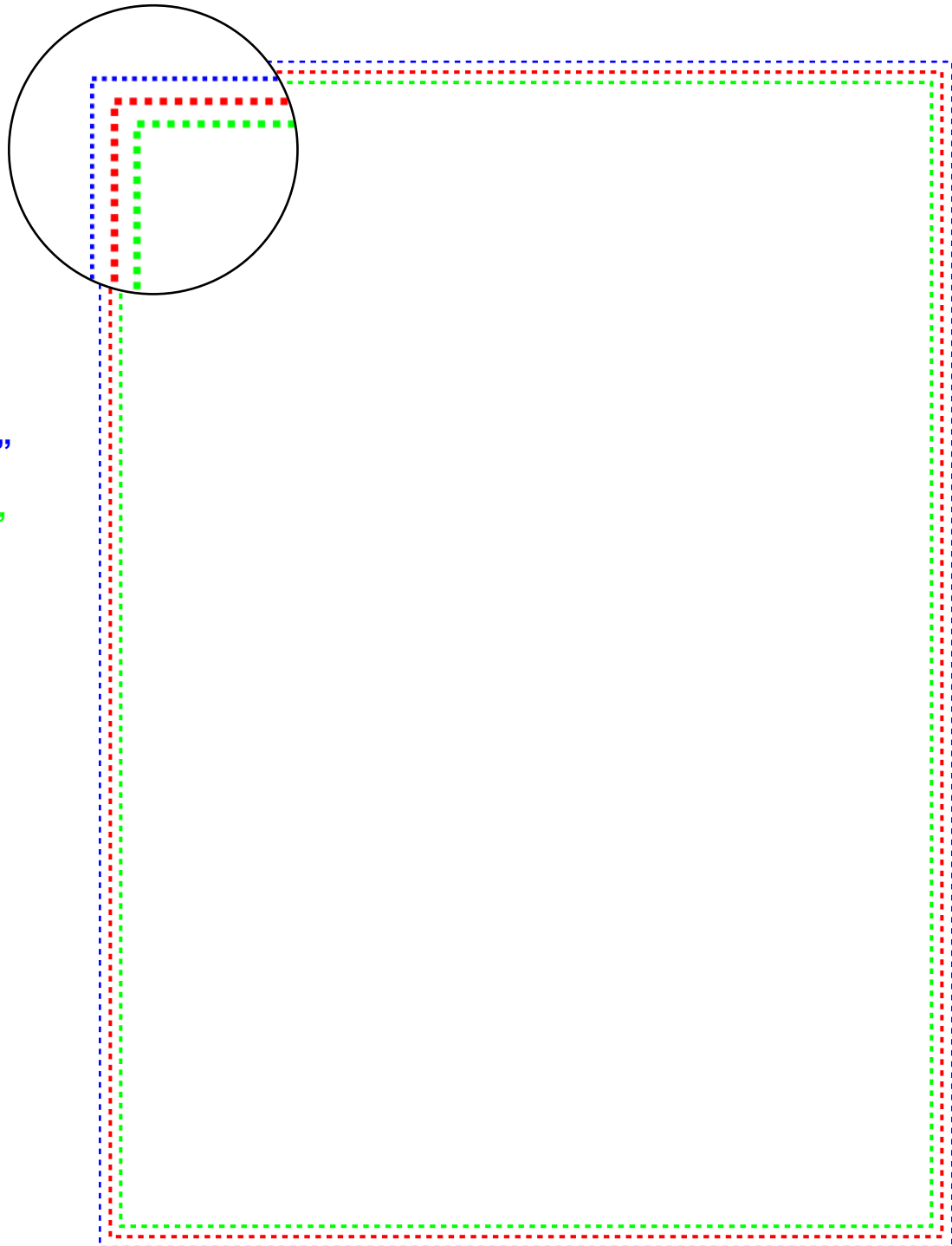
Trim Line

This represents the final size of the product. Anything outside this line will be cut off.

Safe Area

An inner margin of 0.125" inside the trim line. All important elements such as text and logos should stay within this area to avoid being cut.

NOTE: FOR HORIZONTAL FORMAT, SIMPLY SWAP WIDTH AND HEIGHT. THE BLEED REMAINS THE SAME ON ALL SIDES.



Bleed Area 5.125" x 7.125"
Cut Line 5" x 7"
Safe Area 4.875" x 6.875"

Bleed

An extra margin of 0.125" added around the design that will be trimmed after printing. It prevents unwanted white edges. All backgrounds and images should extend to the bleed area.

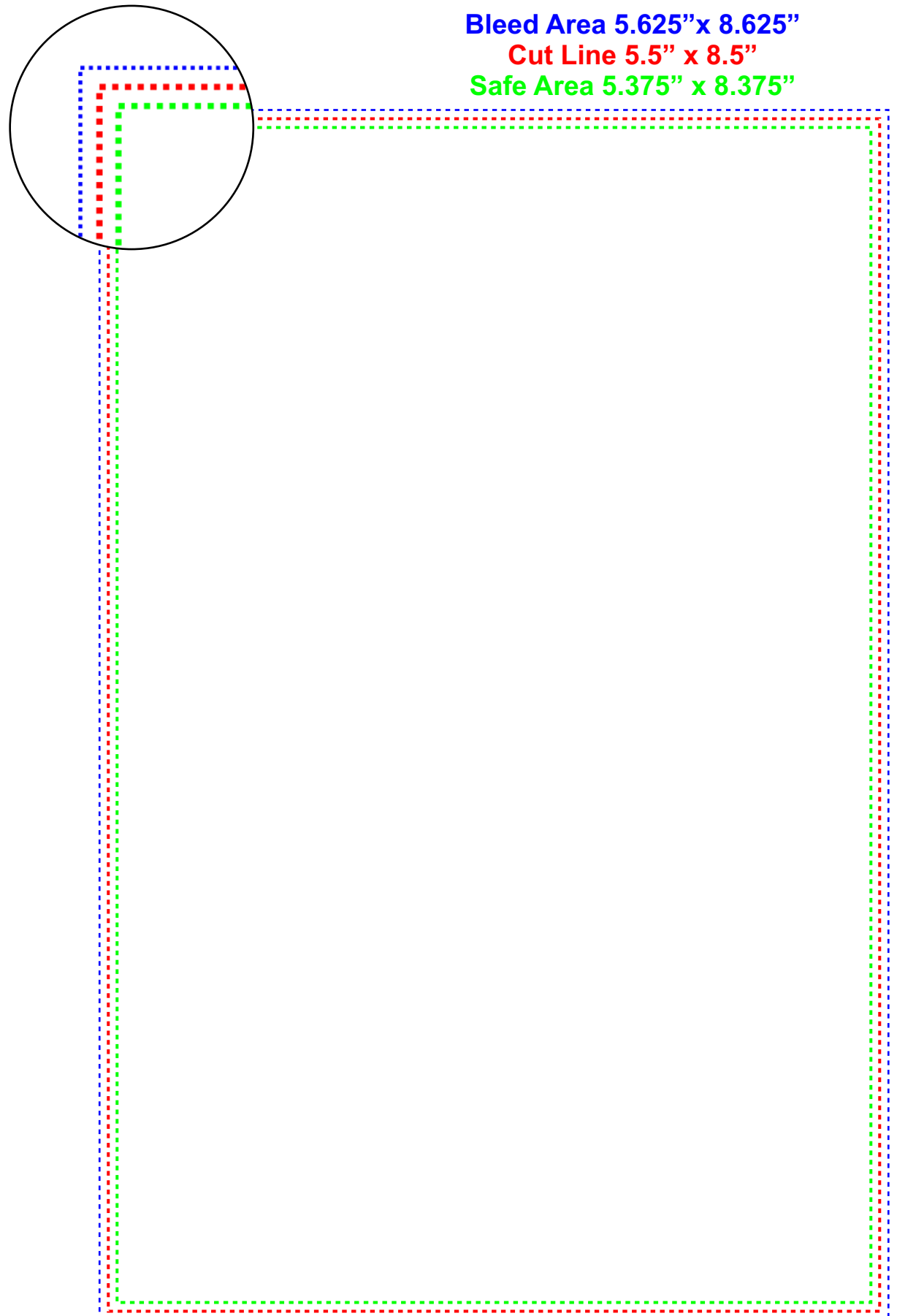
Trim Line

This represents the final size of the product. Anything outside this line will be cut off.

Safe Area

An inner margin of 0.125" inside the trim line. All important elements such as text and logos should stay within this area to avoid being cut.

NOTE: FOR HORIZONTAL FORMAT, SIMPLY SWAP WIDTH AND HEIGHT. THE BLEED REMAINS THE SAME ON ALL SIDES.



Bleed

An extra margin of 0.125" added around the design that will be trimmed after printing. It prevents unwanted white edges.

All backgrounds and images should extend to the bleed area.

Trim Line

This represents the final size of the product.

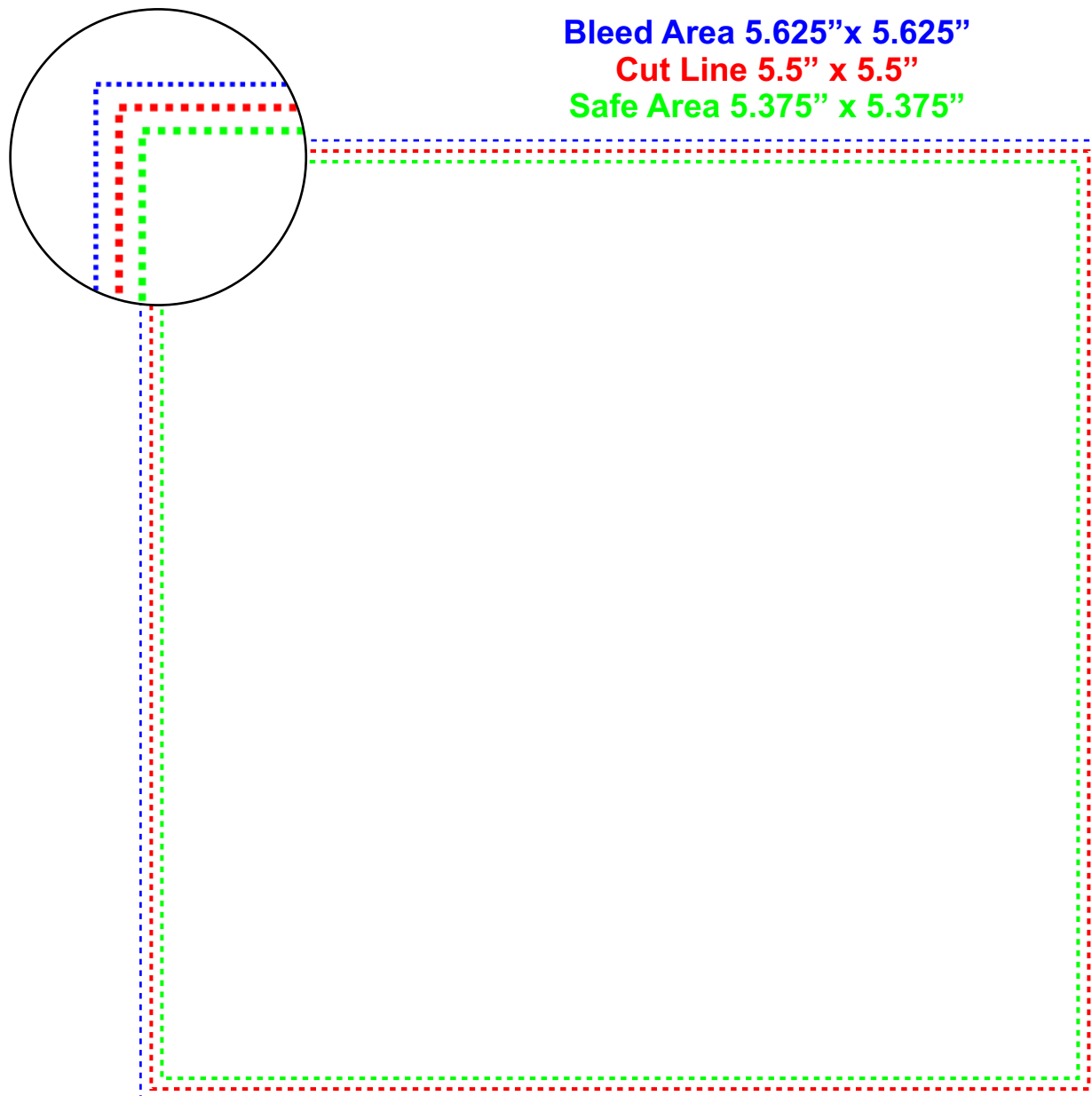
Anything outside this line will be cut off.

Safe Area

An inner margin of 0.125" inside the trim line.

All important elements such as text and logos should stay within this area to avoid being cut.

NOTE: FOR HORIZONTAL FORMAT, SIMPLY SWAP WIDTH AND HEIGHT. THE BLEED REMAINS THE SAME ON ALL SIDES.



Bleed

An extra margin of 0.125" added around the design that will be trimmed after printing. It prevents unwanted white edges. All backgrounds and images should extend to the bleed area.

Trim Line

This represents the final size of the product. Anything outside this line will be cut off.

Safe Area

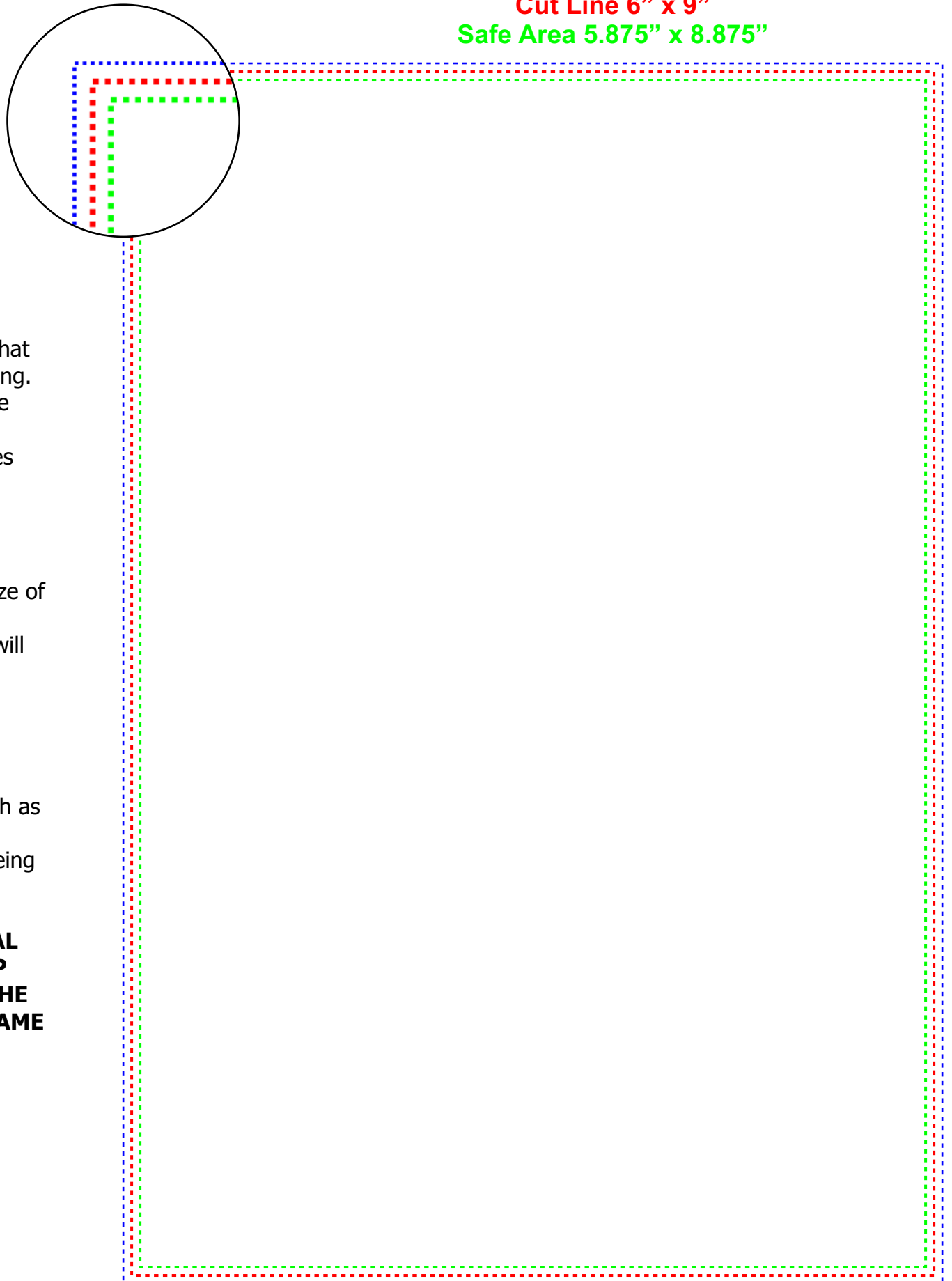
An inner margin of 0.125" inside the trim line. All important elements such as text and logos should stay within this area to avoid being cut.

NOTE: FOR HORIZONTAL FORMAT, SIMPLY SWAP WIDTH AND HEIGHT. THE BLEED REMAINS THE SAME ON ALL SIDES.

Bleed Area 6.125" x 9.125"

Cut Line 6" x 9"

Safe Area 5.875" x 8.875"



Bleed

An extra margin of 0.125" added around the design that will be trimmed after printing. It prevents unwanted white edges.

All backgrounds and images should extend to the bleed area.

Trim Line

This represents the final size of the product.

Anything outside this line will be cut off.

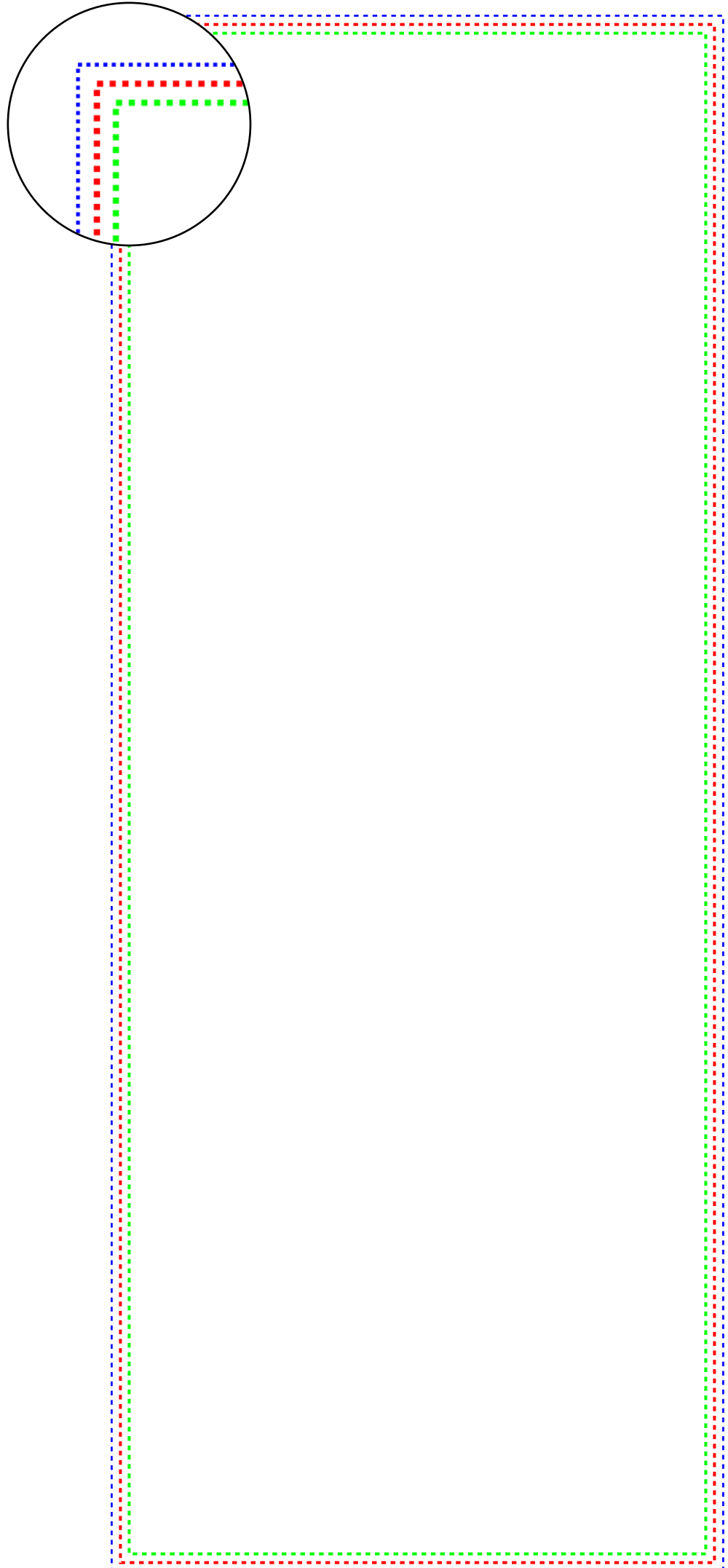
Safe Area

An inner margin of 0.125" inside the trim line.

All important elements such as text and logos should stay within this area to avoid being cut.

NOTE: FOR HORIZONTAL FORMAT, SIMPLY SWAP WIDTH AND HEIGHT. THE BLEED REMAINS THE SAME ON ALL SIDES.

Bleed Area 4.325" x 11.125"
Cut Line 4.25" x 11"
Safe Area 4.125" x 10.875"



Bleed

An extra margin of 0.125" added around the design that will be trimmed after printing. It prevents unwanted white edges. All backgrounds and images should extend to the bleed area.

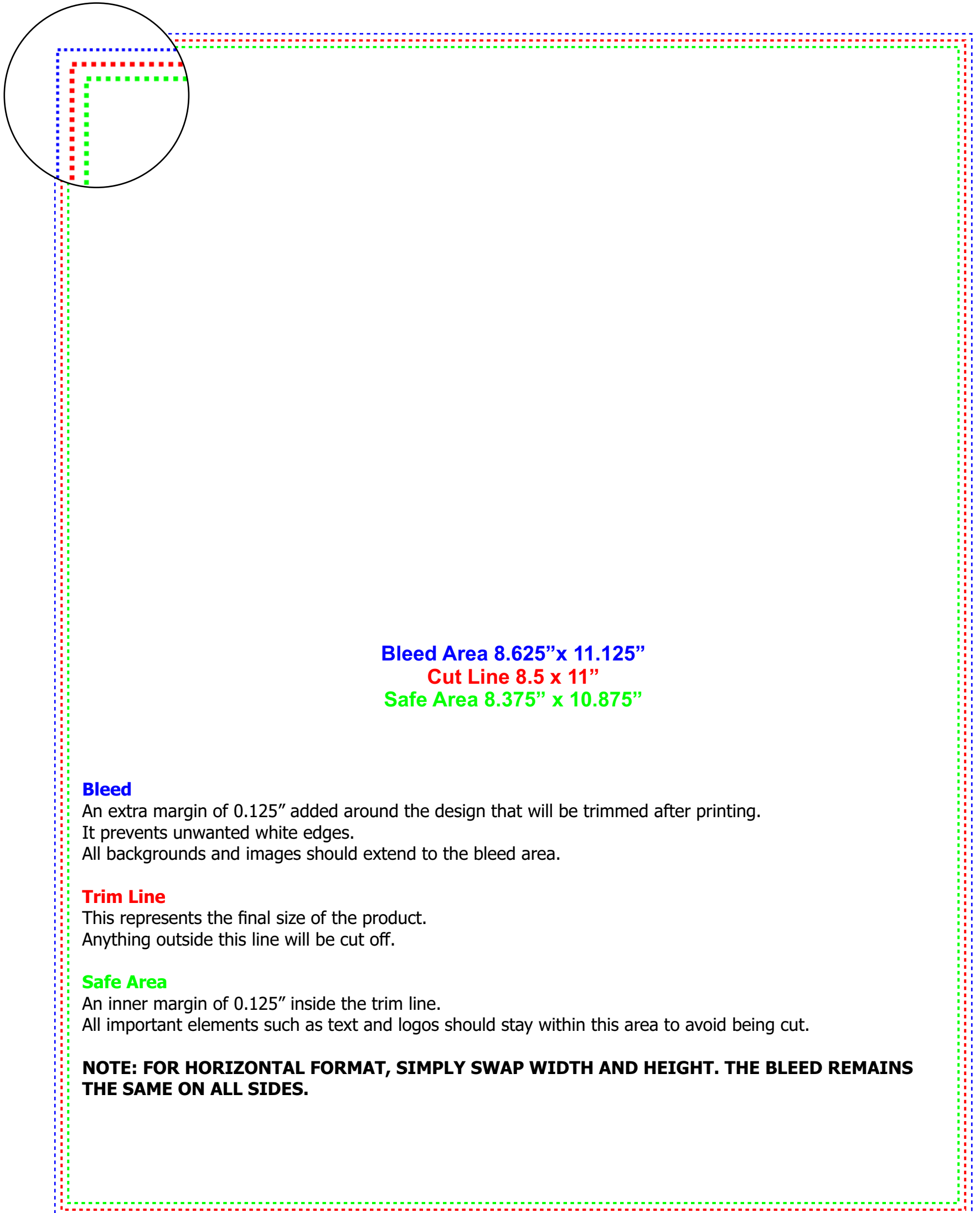
Trim Line

This represents the final size of the product. Anything outside this line will be cut off.

Safe Area

An inner margin of 0.125" inside the trim line. All important elements such as text and logos should stay within this area to avoid being cut.

NOTE: FOR HORIZONTAL FORMAT, SIMPLY SWAP WIDTH AND HEIGHT. THE BLEED REMAINS THE SAME ON ALL SIDES.



Bleed Area 8.625" x 11.125"

Cut Line 8.5 x 11"

Safe Area 8.375" x 10.875"

Bleed

An extra margin of 0.125" added around the design that will be trimmed after printing.
It prevents unwanted white edges.
All backgrounds and images should extend to the bleed area.

Trim Line

This represents the final size of the product.
Anything outside this line will be cut off.

Safe Area

An inner margin of 0.125" inside the trim line.
All important elements such as text and logos should stay within this area to avoid being cut.

NOTE: FOR HORIZONTAL FORMAT, SIMPLY SWAP WIDTH AND HEIGHT. THE BLEED REMAINS THE SAME ON ALL SIDES.